

amazing TALES



of electricity,
safety & conservation



Grades 5 to 8

SHOCKING FACTS!

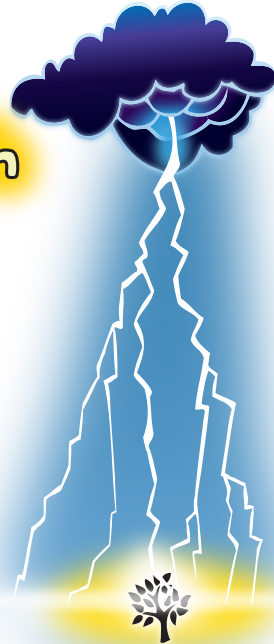
Energy saving bulbs are COOL!

The old style of light bulb (incandescent) wastes a lot of energy generating heat, not light. CFL and LED light bulbs are more efficient – they use much less energy, and waste almost none of it getting hot.



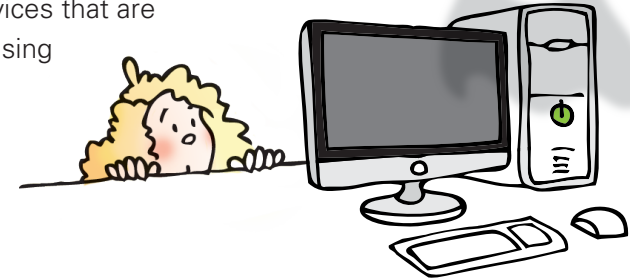
Newsflash

Lightning is caused by electrical charges that build up in clouds. A lightning strike usually lasts around 1 or 2 microseconds, contains millions of volts of electricity, and is around 20,000°C (that's hot!). It also makes a loud noise: thunder! It's not safe to be outside during a lightning storm. Always take shelter in an enclosed building, like your house or your school, or in a hard-topped vehicle. Never try to take shelter under a tree because it could be struck by lightning and you could get a serious shock.



Beware the phantom...

Many electronic devices, such as computers, stereos and cellphone chargers, keep using a small amount of power—even when they're turned off! You can defeat "phantom power" by unplugging devices that are not in use, or by using power bars with a timer feature.

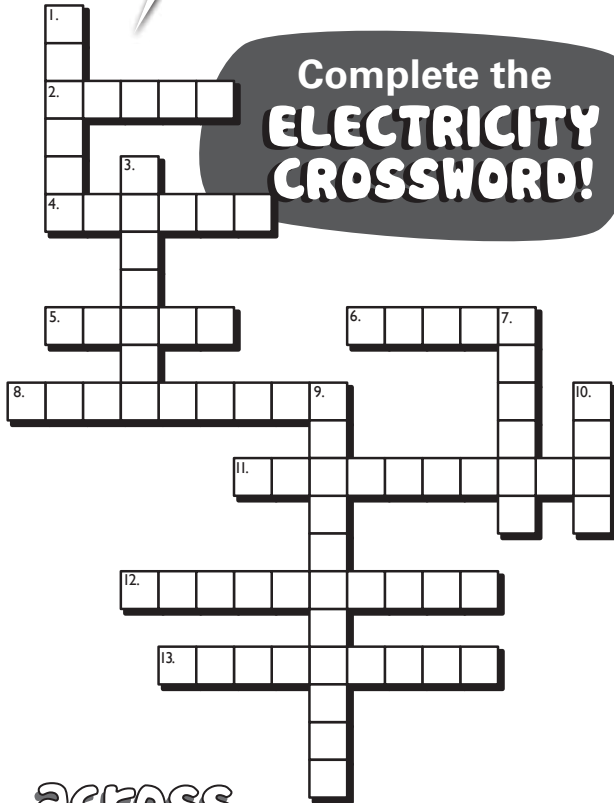


People with power!

At Hydro Ottawa, some people work inside offices and help our customers, and others work as electricians in transformer stations. Outside, our employees work overhead and underground, installing and repairing the power lines across the city so that electricity can make it from the generating station to your home.



SHOCKING & PUZZLING



Complete the
**ELECTRICITY
CROSSWORD!**

WORD JUMBLE!

These words have been jumbled.
What are they?

1. MARGEPEA
2. ISLARSNTOU
3. NLHTNIGIG
4. GYENRE
5. DCCUONTRO
6. DCRO
7. ICIUCTR
8. AFLHS
9. DZHAAR
10. EECTSRP
11. REPSSUER
12. PRPECO
13. UANMMIUL
14. UTOTLE
15. KOHSC

across

2. Electricity is generated at a _____ plant
4. Where electricity wants to travel
5. A flash of light, a sign of danger
6. Electricity usually travels through _____
8. _____ energy doesn't use up natural resources
11. Box that controls your home's temperature
12. Saving power is also known as _____
13. When a device wastes very little electricity, we call it _____

down

1. You avoid phantom power when you _____ your devices
3. Measure of electrical pressure
7. What you should always keep in mind when using electricity
9. _____ is a useful form of energy
10. A conductor gives electricity an easy _____

Learn the TERMS!

Amperage or amps

is used to measure an electric current. The more electricity is flowing through a device, the more amperage it uses.

Conductors

are materials that electricity can travel through quickly and easily, such as copper, aluminum, water... and you.

Voltage is the electrical pressure necessary to move electricity to where it is needed, such as through a light's cord and up to the bulb. The higher the voltage, the more electricity will flow.

Insulators are materials that are more difficult for electricity to travel through, such as glass, ceramic or rubber.



HEY KIDS!

For more fun and educational activities, visit:
hydroottawa.com/community/youth-education/for-students

Here is another fun website where you can learn
about electrical safety and conservation:

kids.saveonenergy.ca

HEY PARENTS!

Sign up for MyHydroLink,
Hydro Ottawa's online customer service portal at
hydroottawa.com/account

Power Outages and Emergencies
613-738-0188 (24 hours a day, 7 days a week)

Call before you dig!

For all cable locates, call **Ontario One Call**, a free service, at:
1-800-400-2255

